

Set of data.

3 7 4 9 11 8 4 10

- (i) Mode Available from
- (ii) Median Available from
- (iii) Range my TES
- (iv) Mean account

(5 marks)

2. Here is some data.

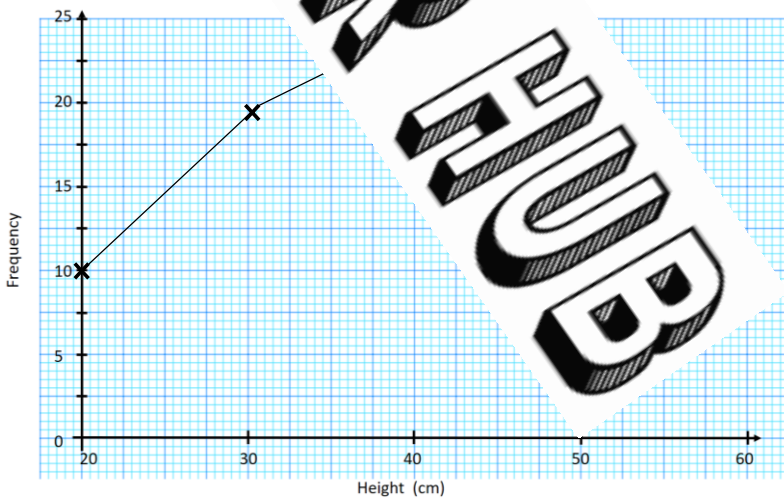
84 72 81 84 78 56 70
75 64 65 5 60 71 58 62

- (a) Use this data to draw a stem and leaf diagram below.
- (b) Calculate the median.

(3 marks)

3. A frequency polygon has been drawn for the table below.

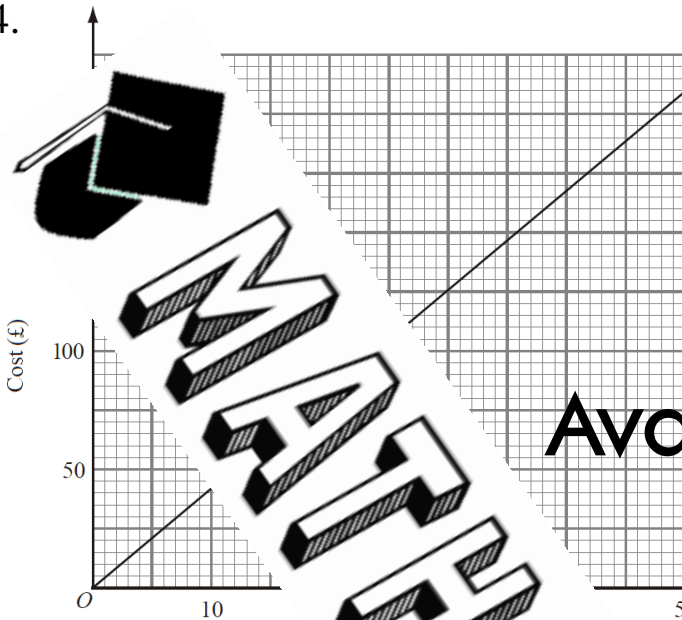
Height (cm)	Frequency
$20 < h \leq 30$	10
$30 < h \leq 40$	19
$40 < h \leq 50$	24
$50 < h \leq 60$	7



- (a) What mistake is made.

(2 marks)

4.



Convert

- (i) 30 m²
- (ii) £50
- (iii) 100 m²
- (iv) £300

Available from (4 marks)
my TES
account

5. The table show the time taken by 100 people for their lunch yesterday.

Time (minutes)	Frequency
$20 < t \leq 30$	9
$30 < t \leq 40$	26
$40 < t \leq 50$	20
$50 < t \leq 60$	16

- (a) State the modal class interval.
- (b) Find the group that contains the median.
- (c) Estimate the mean.

(4 marks)

6. Sophie goes to university which is 35 km away.
The average speed limit on the motor way is 70mph.
How long should it take her to get there on the motorway.

(4 marks)

Score =